

# DRUM PUMPS

FOR EACH LIQUID  
THE RIGHT DRUM PUMP



**g**<sup>®</sup>  
grün-pumpen  
take out, what`s in

# Advantages of grün-drum pumps

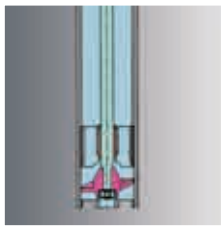


mechanical seal



sealless

- **no inner-tube**
- easily accessible shaft
- easy to clean
- solid shaft
- mechanical seal



singlestage design



multistage design

- **singlestage design**
- big discharge flows

- **multistage design**
- lower noise
- more stages possible, gives more pressure



feed-screw

- **with feed-screw**
- for medium-viscous liquids
- smooth pumping of liquids
- low noise with three-phase motor



quick release coupling



magnetic coupling

- **quick release coupling**
- speedy connection
- robust design
- rugged bow-gear coupling
- suitable for aggressive environments

- **magnetic coupling**
- hermetically sealed
- for gaseous and dangerous liquids
- no leakage



quick release coupling



rigid connection

- **Eccentric screw barrel pump with quick release coupling**
- removable drive motor
- easy and safe handling with the separate pump tube
- no lifting device necessary
- it's possible to drive several pump tubes with only one motor
- **rigid connection** of drive motor and pump tube

## Traditional drum pumps

### Drum pumps with mechanical seal



<b>Applications</b>	<b>PP</b> for aggressive liquids like acids, caustics, vegetable oils, paints ... <b>PVDF</b> highly aggressive liquids like concentrated or mixed acids, ... <b>SS</b> acids, caustics, fruit-juices, milk, paints, thin-bodied oils, ... <b>HC</b> highly aggressive liquids like concentrated or heated acids and solvents, ...
<b>Pump tubes</b>	<b>tube:</b> polypropylene ( <b>PP</b> ), polyvinylidene fluoride ( <b>PVDF</b> ), stainless steel ( <b>SS</b> ) or Hastelloy C4 ( <b>HC</b> ) <b>seal:</b> mechanical seal <b>immersion depth:</b> 700, 1000, 1200 mm and special immersion depth
<b>Drive motors</b>	<b>electrical:</b> p310 = 520 Watt, 230 Volt / 50 Hz, 115 Volt / 60 Hz p400 = 850 Watt, 230 Volt / 50 Hz, 115 Volt / 60 Hz <b>pneumatical:</b> d600 = 600 Watt at 6 bar compressed air
<b>Performance</b>	<b>delivery rate</b> max. 175 l/min <b>delivery head</b> max. 22 mWS <b>viscosity</b> max. 700 mPas

## Modern multipurpose drum pumps

### Sealless drum pumps



<b>Applications</b>	<b>PP</b> for aggressive liquids like acids, caustics, vegetable oils, paints ... <b>PVDF</b> highly aggressive liquids like concentrated or mixed acids, ... <b>SS</b> acids, caustics, fruit-juices, milk, paints, thin-bodied oils, ... <b>HC</b> highly aggressive liquids like concentrated or heated acids and solvents, ...
<b>Pump tubes</b>	<b>tube:</b> polypropylene ( <b>PP</b> ), polyvinylidene fluoride ( <b>PVDF</b> ), stainless steel ( <b>SS</b> ) or Hastelloy C4 ( <b>HC</b> ) <b>seal:</b> sealless <b>immersion depth:</b> 700, 1000, 1200 mm and special immersion depth
<b>Drive motors</b>	<b>electrical:</b> p310 = 520 Watt, 230 Volt / 50 Hz, 115 Volt / 60 Hz p400 = 850 Watt, 230 Volt / 50 Hz, 115 Volt / 60 Hz <b>pneumatical:</b> d600 = 600 Watt at 6 bar compressed air
<b>Performance</b>	<b>delivery rate</b> max. 150 l/min <b>delivery head</b> max. 21 mWS <b>viscosity</b> max. 800 mPas

## For toxic liquids

### Drum pumps with magnetic coupling ...



<b>Applications</b>	suitable for pumping toxic, gaseous and hazardous liquids due to being hermetically sealed with no leakage.
<b>Pump tubes</b>	<b>tube:</b> polypropylene ( <b>PP</b> ), polyvinylidene fluoride ( <b>PVDF</b> ), stainless steel ( <b>SS</b> ) or Hastelloy C4 ( <b>HC</b> ) <b>immersion depth:</b> 700, 1000, 1200 mm and special immersion depth
<b>Drive motors</b>	<b>electrical:</b> p310 = 520 Watt, 230 Volt / 50 Hz, 115 Volt / 60 Hz p400 = 850 Watt, 230 Volt / 50 Hz, 115 Volt / 60 Hz <b>pneumatical:</b> d600 = 600 Watt at 6 bar compressed air
<b>Performance</b>	<b>delivery rate</b> max. 175 l/min <b>delivery head</b> max. 22 mWS <b>viscosity</b> max. 50 mPas

# For each problem the right solution.

## For inflammable liquids

### Explosion-proof drum pumps in stainless steel and HC



<b>Applications</b>	<b>SS</b> inflammable liquids according to VbF <b>HC</b> highly aggressive and inflammable liquids
<b>Pump tubes</b>	<b>tube:</b> stainless steel ( <b>SS</b> ) or Hastelloy C4 ( <b>HC</b> ) <b>seal:</b> mechanical seal or sealless <b>immersion depth:</b> 700, 1000, 1200 mm and special immersion depth
<b>Drive motors</b>	<b>electrical:</b> Ex700 = 700 Watt, 230 Volt / 50 Hz (ATEX) Ex700 = 700 Watt, 115 Volt / 60 Hz (ATEX) <b>pneumatical:</b> d600 = 600 Watt at 6 bar compressed air (ATEX)
<b>Performance</b>	<b>delivery rate</b> max. 150 l/min <b>delivery head</b> max. 17 mWS <b>viscosity</b> max. 800 mPas

## For mixed liquids

### Mixing drum pumps in PP and stainless steel



<b>Applications</b>	<b>PP</b> aggressive emulsions, dispersions and suspensions <b>SS</b> paints and lacquers and other mixed and inflammable liquids
<b>Pump tubes</b>	<b>tube:</b> polypropylene ( <b>PP</b> ) or stainless steel ( <b>SS</b> ) <b>seal:</b> sealless <b>immersion depth:</b> 700, 1000, 1200 mm and special immersion depth
<b>Drive motors</b>	<b>electrical:</b> p310 = 520 Watt, 230 Volt / 50 Hz, 115 Volt / 60 Hz p400 = 850 Watt, 230 Volt / 50 Hz, 115 Volt / 60 Hz <b>explosion-proofed:</b> Ex700 = 700 Watt, 230 Volt / 50 Hz, 115 Volt / 60 Hz (ATEX) <b>pneumatical:</b> d600 = 600 Watt at 6 bar compressed air
<b>Performance</b>	<b>delivery rate</b> max. 145 l/min <b>delivery head</b> max. 21 mWS <b>viscosity</b> max. 800 mPas

## For complete drum emptying

### Complete-drainage drum pump in PP and stainless steel








<b>Applications</b>	<b>PP</b> for aggressive liquids like acids, caustics, vegetable oils, paints, galvanic liquids, ... <b>Niro</b> acids, caustics, fruit-juices, milk, paints, thin-bodied oils, ...
<b>Pump tubes</b>	<b>tube:</b> polypropylene ( <b>PP</b> ) or stainless steel ( <b>SS</b> ) <b>seal:</b> mechanical seal <b>immersion depth:</b> 700, 1000, 1200 mm and special immersion depth
<b>Drive motors</b>	<b>electrical:</b> p310 = 520 Watt, 230 Volt / 50 Hz, 115 Volt / 60 Hz p400 = 850 Watt, 230 Volt / 50 Hz, 115 Volt / 60 Hz <b>pneumatical:</b> d600 = 600 Watt at 6 bar compressed air
<b>Performance</b>	<b>delivery rate</b> max. 80 l/min <b>delivery head</b> max. 16 mWS <b>viscosity</b> max. 700 mPas




## GLP25 - for many applications

**NEW** - the innovative and mobile laboratory / industry pump

	<b>Applications</b>	<b>general:</b> non inflammable liquids, acids and basis low concentrated, fluids of medium viscosity (colours, emulsions, dispersions, suspensions, oils) <b>extra liquids:</b> inflammable liquids when ATEX is not required (special laboratory conditions) pumping heavy and viscous liquids only in small quantities, motor temperature is limited	
	<b>Motor</b>	<b>electric:</b> max. 160 W, 230 Volt / 50 Hz	
	<b>delivery rate</b>	0 - 30 l/min with discharge tube	
	<b>pump units</b>	<b>wetted materials:</b> PP, Stainless Steel, FKM <b>length of tube:</b> 500, 700, 1000 mm	
<div style="display: flex; justify-content: space-around; align-items: center;"> <div>  <p>Click-joint</p> </div> <div>  <p>different container sizes</p> </div> <div>  <p>discharge tube, nozzle</p> </div> </div>			


## For medium-viscosity liquids

Feed-screw drum pumps in PP und stainless steel

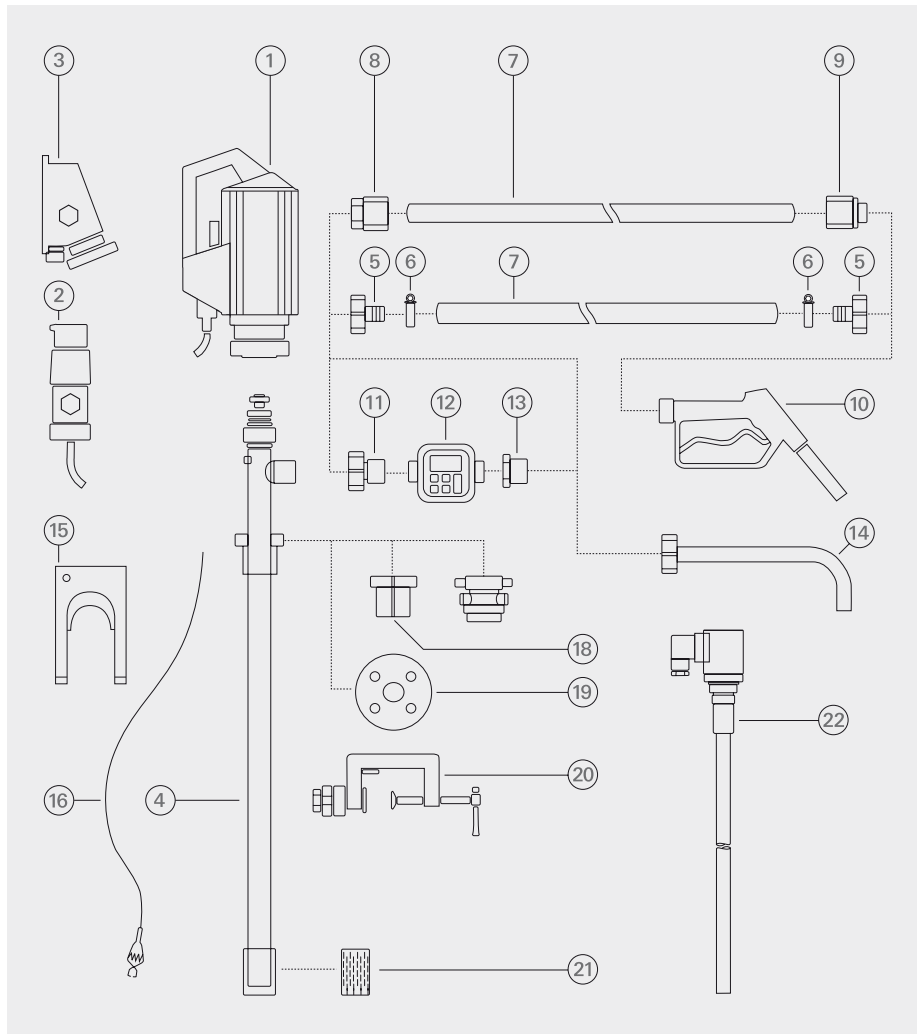
	<b>Applications</b>	<b>PP</b> aggressive medium-viscosity liquids and paints, vegetable oils, cosmetics, .... <b>SS</b> paints, lacquers, fruit-juices, oils, vegetable oils, cosmetics, foods, ....
	<b>Pump tubes</b>	<b>tube:</b> polypropylene ( <b>PP</b> ) or stainless steel ( <b>SS</b> ) <b>seal:</b> mechanical seal or sealless <b>immersion depth:</b> 700, 1000, 1200 mm and special immersion depth
	<b>Drive motors</b>	<b>electrical:</b> p400 = 850 Watt, 230 Volt / 50 Hz, 115 Volt / 60 Hz, (universal motor) pd500 = 0,37 kW, single 230 V / 50 Hz or three-phase 400 V / 50 Hz <b>pneumatical:</b> d600 = 600 Watt at 6 bar compressed air
	<b>Performance</b>	<b>delivery rate</b> max. 65 l/min <b>delivery head</b> max. 10 mWS <b>viscosity</b> max. 1500 mPas

## For high-viscosity liquids

Eccentric screw drum pumps in stainless steel

	<b>Applications</b>	for pumping high-viscosity liquids like resin, paints, lacquers, glue, oil, soap, shampoo, ointment, honey, sirup, tomato paste, fruit concentrate, molasse, glucose, ...
	<b>Pump tubes</b>	<b>tube:</b> stainless steel ( <b>SS</b> ) <b>stators:</b> NBR, NBR-light, FPM, PTFE <b>seal:</b> mechanical seal or packing gland <b>immersion depth:</b> 1000 mm and special immersion depth
	<b>Drive motors</b> other on demand	<b>rigid or quick release coupling</b> <b>electrical:</b> 0,37 – 1,5 kW, 700 or 900 rpm, 400 Volt / 50 Hz <b>pneumatical:</b> 0,5 – 1,1 kW, up to 1000 rpm at 6 bar compressed air
	<b>Performance</b>	<b>delivery rate</b> max. 50 l/min <b>delivery head</b> max. 12 bar <b>viscosity</b> max. 100.000 mPas

## Accessories



- 1 Drive motor
- 2 Explosion-proof plug
- 3 Explosion-proof socket
- 4 Pump tube
- 5 Hose connector
- 6 Hose clamps
- 7 Hose
- 8 Hose fittings
- 9 Hose fittings
- 10 Nozzle
- 11 Flow meter connection
- 12 Flow meter
- 13 Reducing piece
- 14 Discharge spout
- 15 Wall bracket
- 16 Equipotential bounding cable
- 17 Emission proof drum adapter
- 18 Drum adapter
- 19 Installation flange
- 20 Clamping device
- 21 Foot strainer
- 22 Level switch

**grün-pumpen gmbh**

Otto-Schott-Str. 19

D-97877 Wertheim

Phone (00 49) 93 42 / 93 51 6-0

Fax (00 49) 93 42 / 93 51 6-29

[info@gruen-pumpen.de](mailto:info@gruen-pumpen.de)

[www.gruen-pumpen.de](http://www.gruen-pumpen.de)



take out, what's in.